



”

*Children are like butterflies in the wind.
Some fly higher than others, but all of them fly
as best as they can. Do not compare them to each other,
for each child is unique, wonderful
and someone very special!*

SPECIAL EDUCATIONAL NEEDS PRACTICE HERNE

DBSH and BHP professional association
approved

Bahnhofstrasse Practice

Bahnhofstrasse 1 – 3
[Side entrance Museumsstrasse / 2nd floor]
44623 Herne, Germany

Edmund-Weber-Strasse Practice

Edmund-Weber-Strasse 206a
44651 Herne, Germany

Phone +49 (0)2323 / 51512

Fax +49 (0)2323 / 51614

info@heilpaedagogische-praxis-herne.de
www.heilpaedagogische-praxis-herne.de

WE OFFER CHILDREN...

- with developmental disabilities,
- with physical disabilities or children who are at risk of developing a disability,
- with cognitive disorders,
- with learning difficulties,
- with an autism spectrum disorder,
- with social relationship and communication problems

various options **based on differentiated** and in part **multidisciplinary** diagnostic methods.

OUR TEAM CONSISTS OF...

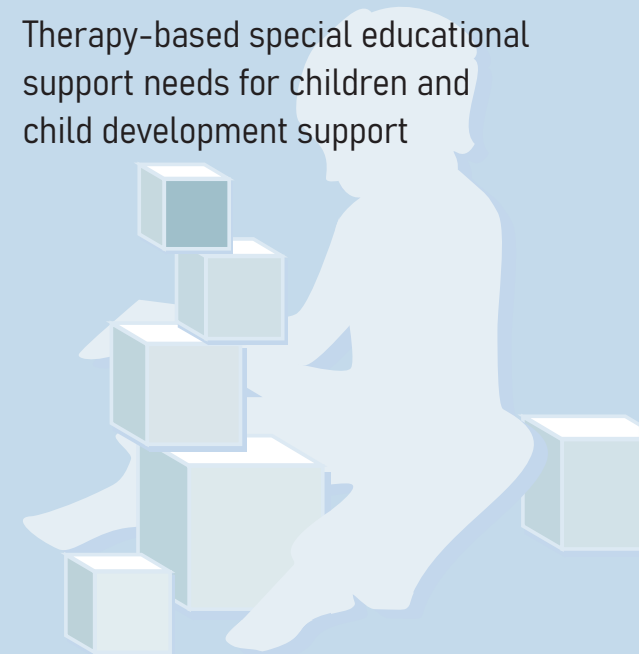
- Special educational needs therapists,
- Social pedagogy practitioners,
- Psychomotor therapists,
- Doctors,
- Psychologists,
- Occupational therapists,
- Physiotherapists

All of us have an **extensive list of additional qualifications** and experience gained in various settings. Of course, we also attend **further qualification courses** on a regular basis and ensure that your child always **receives optimum support**.

ALL-ROUND SUPPORT AT ONE PRACTICE

Interdisciplinary early years
special educational needs support

Therapy-based special educational
support needs for children and
child development support



WE FOCUS ON...

Children aged between 0 and 6 years whose **development does not progress as expected**, with developmental disabilities as well as children who are at risk of developing or already have a disability.

Early years special educational needs support is guided by the child's individual needs and consists of interdisciplinary **therapy-based special educational as well as therapeutic support** aimed at **promoting the child's participation** in everyday activities at the childcare centre etc.

Of course, our offer not only focuses on the child **but also on the child's immediate and** extended family.

We offer you:

- Information and an opportunity to discuss your child's needs
- Advice
- Specialist knowledge and experience
- Referrals to additional offers



WE OFFER...

- Open special educational needs counselling service
- Diagnostic development assessment – educational as well as medical-therapeutic
- Individual one-to-one and group interventions
- A wide range of therapy-based special educational needs support approaches
- Therapies in the areas of:
 - Speech and language therapy, physiotherapy, occupational therapy
- Counselling psychologist service
- Multidisciplinary cooperation with specialists and specialist facilities

ACCOMPANYING MEASURES

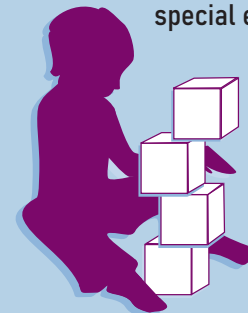
- Parent counselling and support
- Advice on specialist facilities
- Child observation and assessment in a kindergarten or school setting
- Collaboration with other specialist disciplines
- Parents' evenings and further education offers for parents



FIVE STEPS TOWARDS INTERDISCIPLINARY EARLY YEARS SPECIAL EDUCATIONAL NEEDS (IEYSEN) SUPPORT

- 1 Ask your paediatrician for advice if you or others are **worried about or notice** that your child may have development difficulties.
- 2 The **paediatrician** decides whether an interdisciplinary early years special educational needs support assessment is indicated, and **will give you a respective prescription**.
- 3 **You come to us with this prescription**.
- 4 The paediatrician must use the form **"Verordnungsmuster 16"** for this prescription, and it must include the wording: **Initial assessment interdisciplinary early years special educational needs support, developmental disorder diagnosis**.

- 5 We carry out an **initial assessment**, draw up a **support plan and care plan**, and also assist you with the completion of the **application for special educational support / therapy** that must be submitted to the local authority, if necessary.



ONE-TO-ONE EARLY YEARS SPECIAL EDUCATIONAL NEEDS SUPPORT / THERAPY-BASED SPECIAL EDUCATIONAL NEEDS SUPPORT

Therapy-based special educational needs support covers **all educational needs**. It is aimed at children **up to the age of six and** potentially (provided the local authority agrees to bear the costs) primary school age children.

Interdisciplinary early years special educational needs (IEYSEN) support and one-to-one therapy-based special educational needs support is provided in the form of **one-to-one or small group sessions at the practice, at child care centres or in the child's home**.

How to get support:

- Call us for an appointment
- Come to us for an open counselling session
- Pedagogical-therapeutic assessment (provided this has not already been carried out)
- Diagnosis by a doctor for interdisciplinary early years special educational needs support
- Evaluation meeting
- Application submission

Once the local authority Landschaftsverband (LWL) has agreed to bear the costs:

- Agreement of date for the start of the support